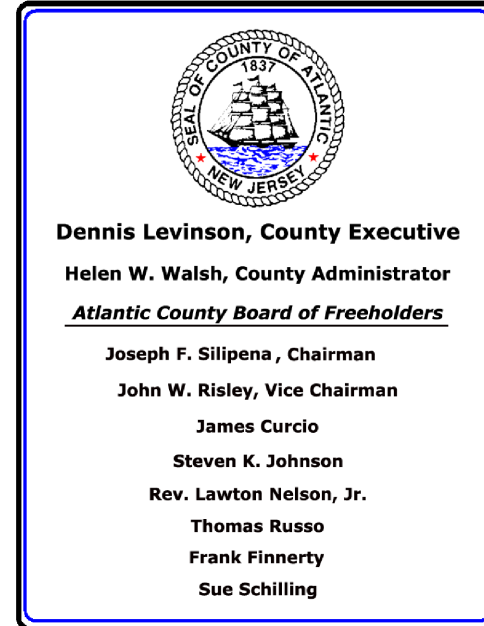


Drug and Weapon Free Zones

Port Republic

Atlantic County, NJ

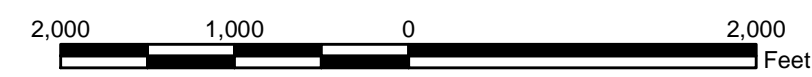


Map Prepared by the Atlantic County
 Department of Regional Planning & Development
 Office of Geographic Information Systems

Joe Maher - Department Head
 Barry Hackleit - Director of GIS
 JANUARY 2004

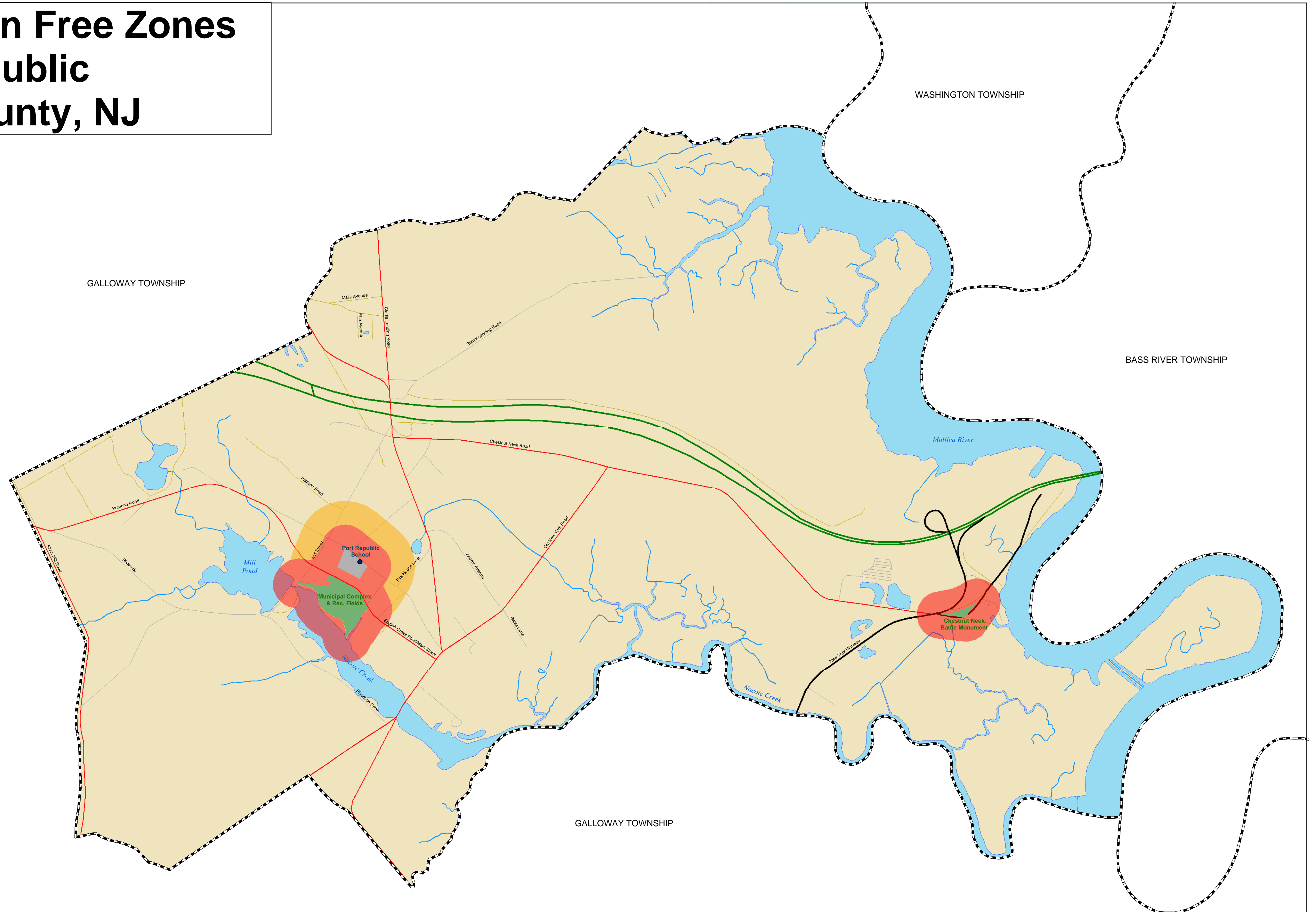
Legend

- | | |
|-------------------------------|-------------------------------|
| ● Schools | Roadways/Line Features |
| --- Municipal Boundaries | — GS Parkway |
| — Streams & Rivers | — AC Expressway |
| Water | — State Highways |
| ■ School Properties | — County Routes |
| ■ Public Lands | — Municipal Streets |
| Drug/Weapon Free Zones | — Other |
| ■ 500 Feet | — Alley |
| ■ 1000 Feet | — Railroad |
| | — Power Line |
| | — Airport |



* This map is for demonstration purposes only and was not developed in accordance with National Map Accuracy Standards. Any use of this product with respect to accuracy and precision shall be the sole responsibility of the user. The map was developed, in part, using New Jersey Department of Environmental Protection Geographic Information System (GIS) digital data, in conjunction with the Atlantic County Office of Geographic Information Systems, but this secondary product has not been verified by NJDEP and is not state authorized.

The geodetic accuracy and precision of the GIS data contained in this map has not been developed nor verified by a professional licensed land surveyor and shall not be nor is intended to be used in matters requiring delineation and location of true ground horizontal and/or vertical controls.
 Project: portrepublic.mxd



GALLOWAY TOWNSHIP