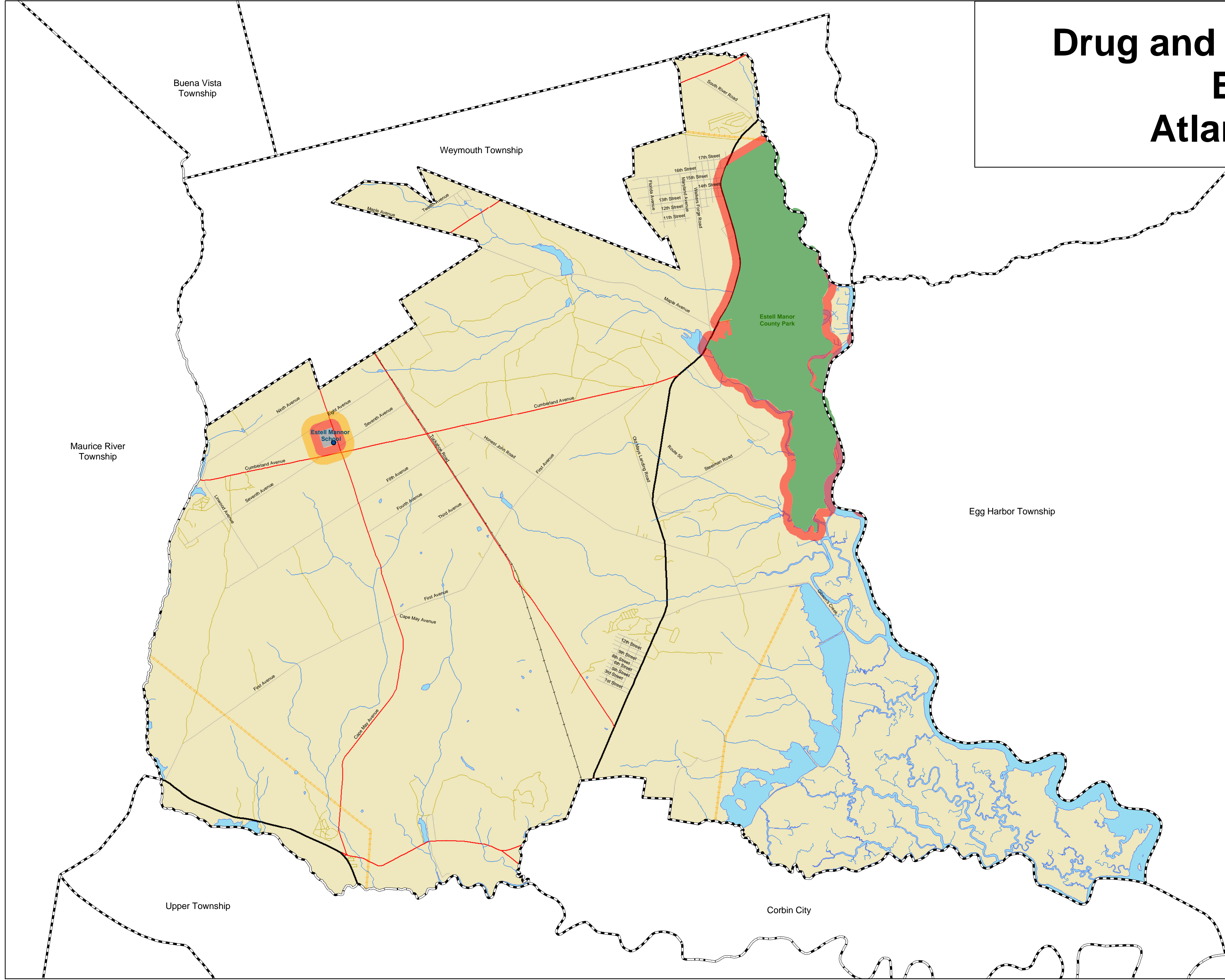


Drug and Weapon Free Zones Estell Manor Atlantic County, NJ




Legend

• Schools	Roadways and Line Features
--- Municipal Boundaries	— GS Parkway
— Streams	— AC Expressway
Water	— State Highways
Public Lands	— County Routes
School Properties	— Municipal Streets
Drug/Weapon Free Zones	— Other
500 Feet	--- Alley
1000 Feet	— Railroad
	--- Power Line
	— Airport

Map Prepared by the Atlantic County
Department of Regional Planning & Development
Office of Geographic Information Systems

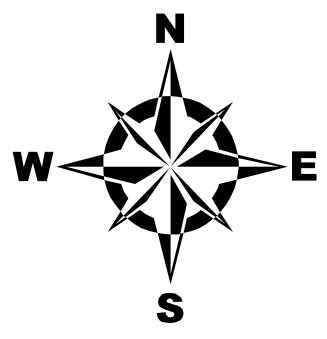
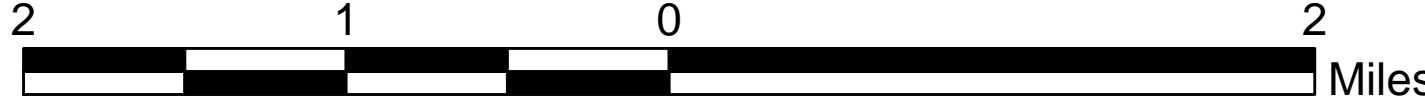
Joe Maher - Department Head
Barry Hackett - Director Office of GIS

JULY 2003



Dennis Levinson, County Executive
Helen W. Walsh, County Administrator
Atlantic County Board of Freeholders

Joseph F. Siligens, Chairman
John W. Ristey, Vice Chairman
James Curcio
Steven K. Johnson
Rev. Lawton Nelson, Jr.
Thomas Russo
Frank Finnerty
Sue Schilling



* This map is for demonstration purposes only and was not developed in accordance with National Map Accuracy Standards. Any use of this product with respect to accuracy and precision shall be the sole responsibility of the user. The map was developed, in part, using New Jersey Department of Environmental Protection Geographic Information System (GIS) digital data, in conjunction with the Atlantic County Office of Geographic Information Systems, but this secondary product has not been verified by NJDEP and is not state authorized.

The geodetic accuracy and precision of the GIS data contained in this map has not been developed nor verified by a professional licensed land surveyor and shall not be nor is intended to be used in matters requiring delineation and location of true ground horizontal and/or vertical controls.*

Project: estellmanor.mxd