



Dennis Levinson, County Executive
Helen W. Walsh, County Administrator
Atlantic County Board of Freeholders

Joseph F. Silipena, Chairman
John W. Risley, Vice Chairman
James Curcio
Steven K. Johnson
Rev. Lawton Nelson, Jr.
Thomas Russo
Frank Finnerty
Sue Schilling

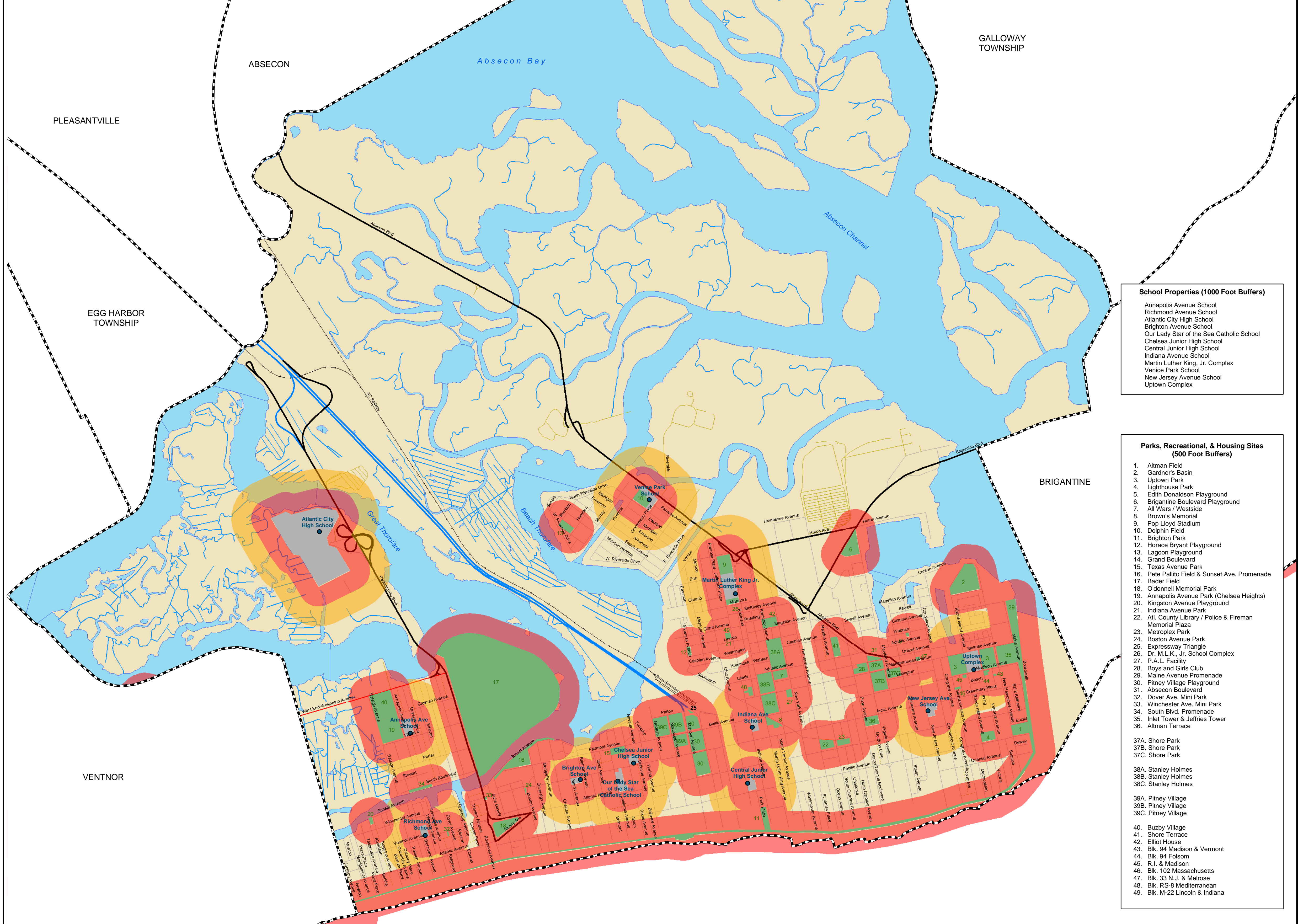
Map Prepared by the Atlantic County
 Department of Regional Planning & Development
 Office of Geographic Information Systems

Joe Maher - Department Head
Barry Hackett - Director of GIS
JULY 2003

Drug and Weapon Free Zones

Atlantic City

Atlantic County, NJ



Legend

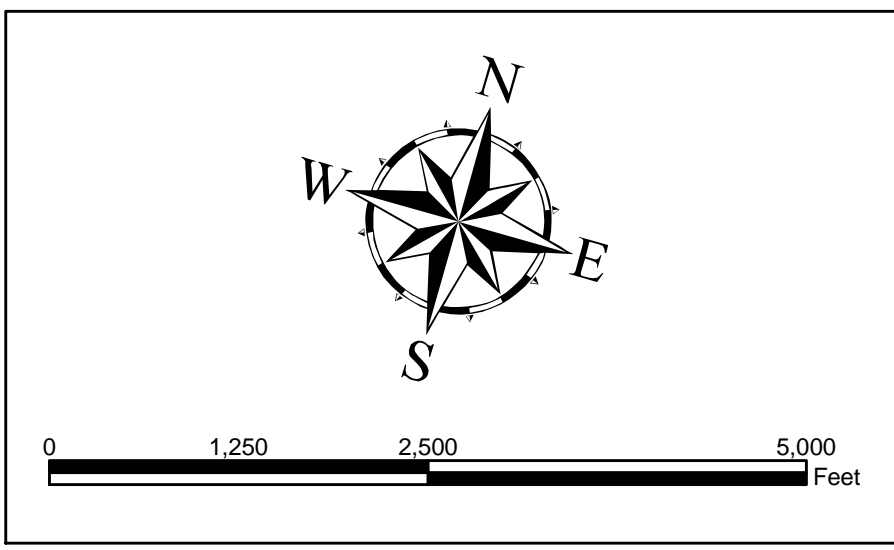
- Schools
 - Municipal Boundaries
 - Streams & Rivers
 - Water
 - School Properties
 - Public Lands
 - Drug/Weapon Free Zones**
 - 500 Feet
 - 1000 Feet
- Roadways/Line Features**
 - GS Parkway
 - AC Expressway
 - State Highways
 - County Routes
 - Municipal Streets
 - Other
 - Alley
 - Railroad
 - Power Line
 - Airport

School Properties (1000 Foot Buffers)

- Annapolis Avenue School
- Richmond Avenue School
- Atlantic City High School
- Brighton Avenue School
- Our Lady Star of the Sea Catholic School
- Chelsea Junior High School
- Central Junior High School
- Indiana Avenue School
- Martin Luther King, Jr. Complex
- Venice Park School
- New Jersey Avenue School
- Uptown Complex

Parks, Recreational, & Housing Sites (500 Foot Buffers)

1. Altman Field
2. Gardner's Basin
3. Uptown Park
4. Lighthouse Park
5. Edith Donaldson Playground
6. Brigantine Boulevard Playground
7. All Wars / Westside
8. Brown's Memorial
9. Pop Lloyds Stadium
10. Dolphin Field
11. Brighton Park
12. Horace Bryant Playground
13. Lagoon Playground
14. Grand Boulevard
15. Texas Avenue Park
16. Pete Pallito Field & Sunset Ave. Promenade
17. Bader Field
18. O'donnell Memorial Park
19. Annapolis Avenue Park (Chelsea Heights)
20. Kingston Avenue Playground
21. Indiana Avenue Park
22. Atl. County Library / Police & Fireman Memorial Plaza
23. Metroplex Park
24. Boston Avenue Park
25. Expressway Triangle
26. Dr. M.L.K., Jr. School Complex
27. P.A.L. Facility
28. Boys and Girls Club
29. Maine Avenue Promenade
30. Pitney Village Playground
31. Absecon Boulevard
32. Dover Ave. Mini Park
33. Winchester Ave. Mini Park
34. South Blvd. Promenade
35. Inlet Tower & Jeffries Tower
36. Altman Terrace
- 37A. Shore Park
- 37B. Shore Park
- 37C. Shore Park
- 38A. Stanley Holmes
- 38B. Stanley Holmes
- 38C. Stanley Holmes
- 39A. Pitney Village
- 39B. Pitney Village
- 39C. Pitney Village
40. Buzby Village
41. Shore Terrace
42. Elliot House
43. Bk. 94 Madison & Vermont
44. Bk. 94 Folsom
45. R.I. & Madison
46. Bk. 102 Massachusetts
47. Bk. 33 N.J. & Melrose
48. Bk. RS-8 Mediterranean
49. Bk. M-22 Lincoln & Indiana



"This map is for demonstration purposes only and was not developed in accordance with National Map Accuracy Standards. Any use of this product with respect to accuracy and precision shall be the sole responsibility of the user. The map was developed, in part, using New Jersey Department of Environmental Protection Geographic Information System (GIS) digital data, in conjunction with the Atlantic County Office of Geographic Information Systems, but this secondary product has not been verified by NJDEP and is not state authorized.

The geodetic accuracy and precision of the GIS data contained in this map has not been developed nor verified by a professional licensed land surveyor and shall not be nor is intended to be used in matters requiring delineation and location of true ground horizontal and/or vertical controls."

Project: atlanticcity.mxd