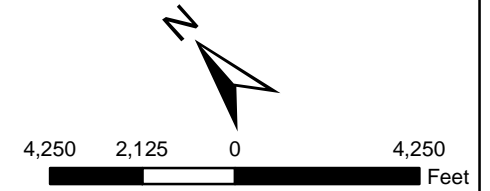
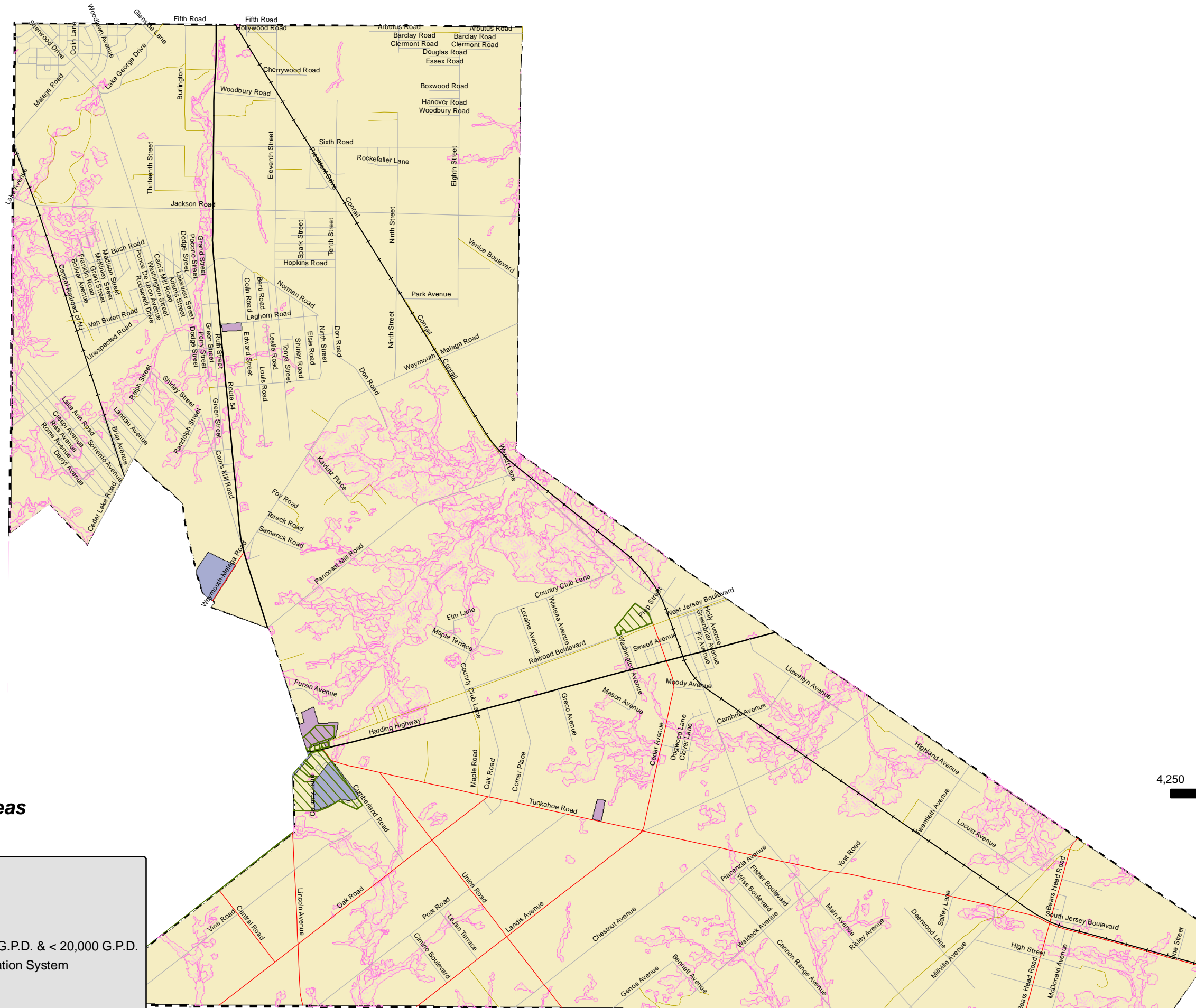


Buena Vista Existing Sewer Service Areas & NJDEP 4/2009 SSA

Legend

- April 2009 Atlantic SSA Draft
- Wetlands
- Existing Sewer Service Areas**
- GW20: Ground Water Discharge > 2,000 G.P.D. & < 20,000 G.P.D.
- NJPDES: N.J. Pollution Discharge Elimination System
- Reserve
- Septic: 2,000 G.P.D.
- Sewer
- Municipalities



NOTE: Sewer service areas depicted on this map are for planning purposes only. The NJDEP should be contacted to determine if a property is within a sewer service area. The service areas depicted in this map are the approved Sewer Service areas and do not necessarily depict the boundaries of existing service. Please contact the municipality of interest for information regarding actual service limits. GPD=Gallons Per Day

This map is for demonstration purposes only and was not developed in accordance with National Map Accuracy Standards. Any use of this product with respect to accuracy and precision shall be the sole responsibility of the user. The map was developed, in part, using New Jersey Department of Environmental Protection Geographic Information System (GIS) digital data, in conjunction with the Atlantic County Office of Geographic Information Systems, but this secondary product has not been verified by NJDEP and is not state authorized. The geodetic accuracy and precision of the GIS data contained in this map has not been developed nor verified by a professional licensed land surveyor and shall not be used in matters requiring delineation and location of true ground horizontal and/or vertical controls
File: BuenaVistaSewerService_NJDEPSSA.mxd 2/23/2009